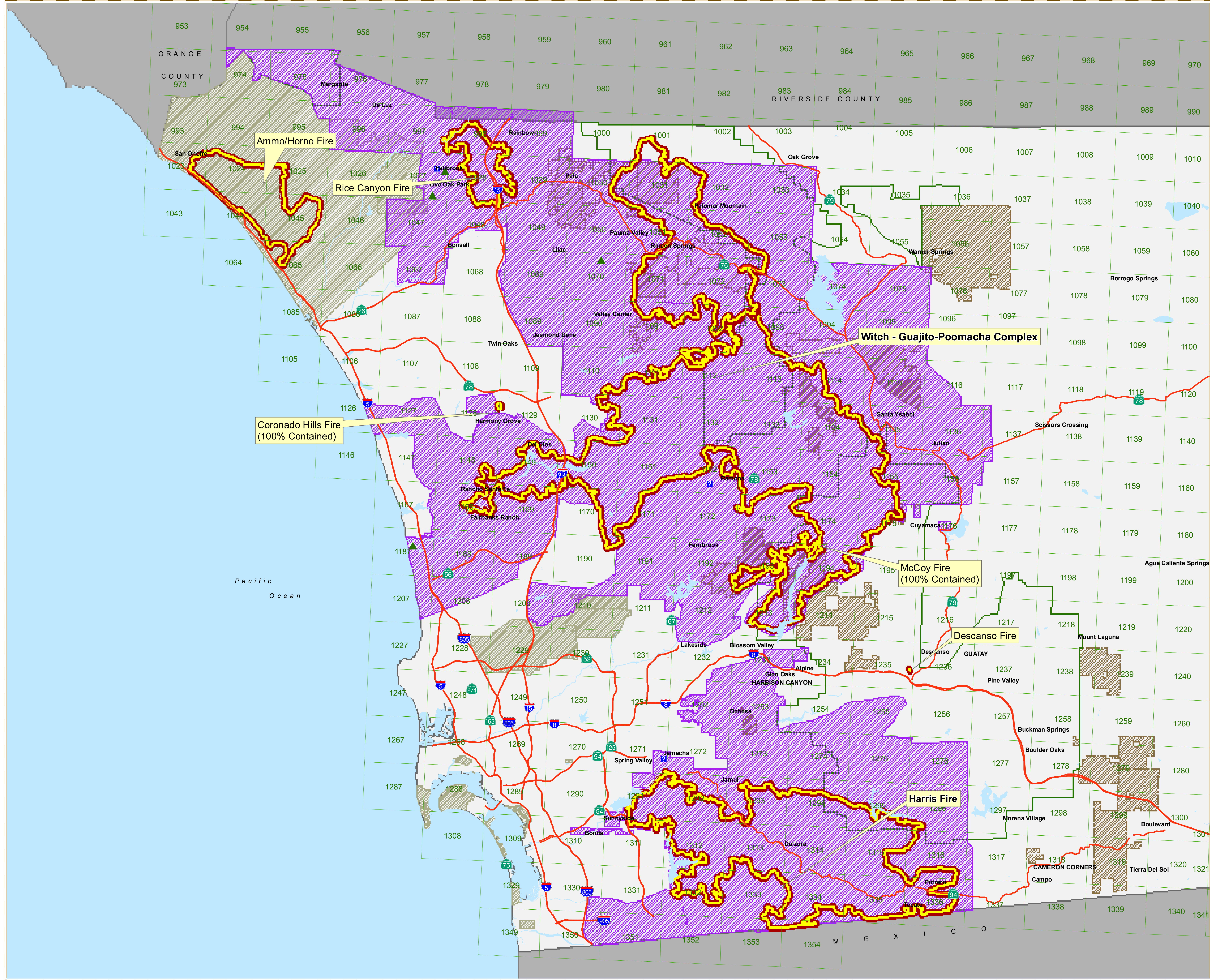


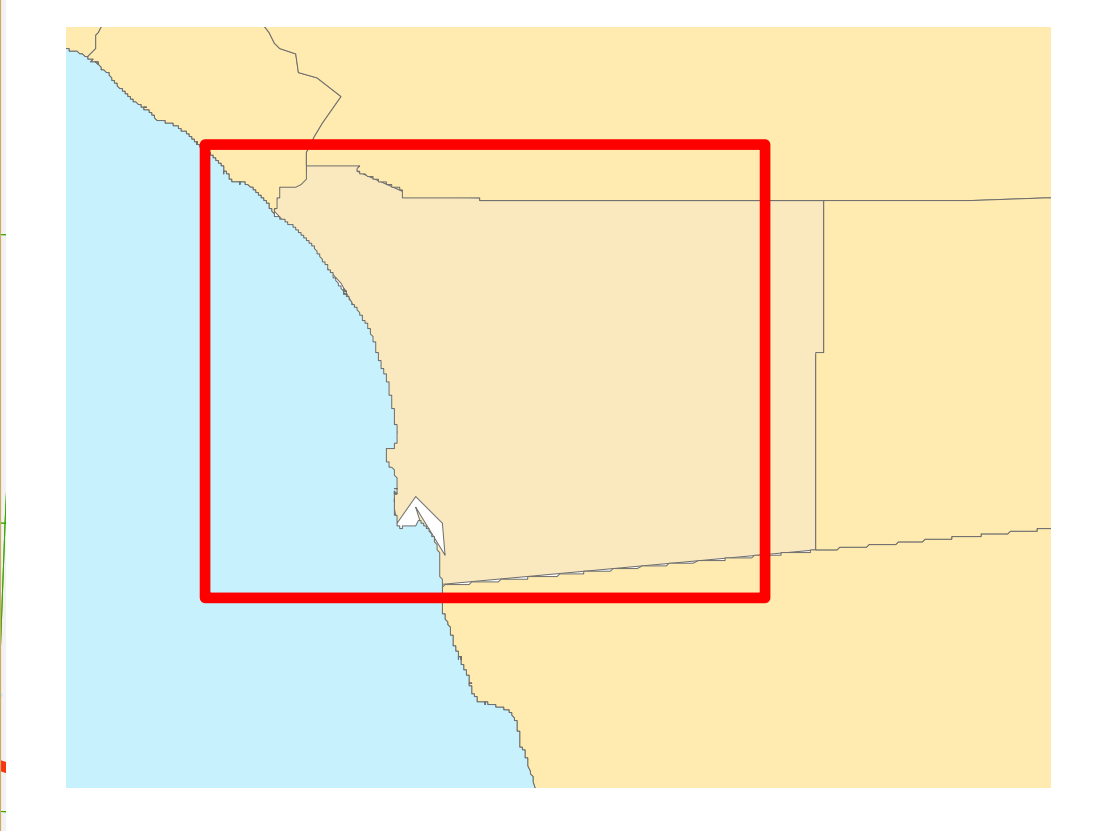
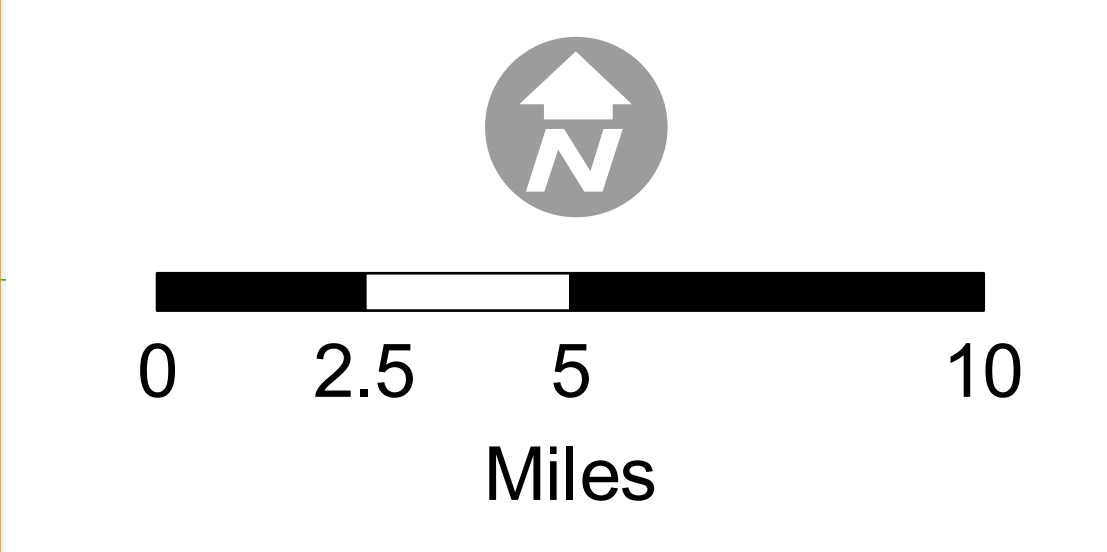
San Diego County  
Evacuated Area and  
Fire Perimeter  
1600 hrs  
October 29, 2007

Perimeters from:  
CAL Fire  
MODIS Satellite Data  
WebEOC information,  
City of San Diego Fire.



- Local Assistance Centers
- Shelters
- Freeways
- Thomas Bros. Pages
- Lakes
- Approx. Fire Perimeters
- Approx. Evacuated Area
- Cleveland National Forest

Data Source: SanGIS  
Disclaimer: This map is provided without warranty of any kind, either expressed or implied, including but not limited to, the implied warranties of merchantability and fitness for a particular purpose. This product may contain information from the SANDAG Regional Information System, which cannot be reproduced without written permission of SANDAG. This product may contain information which has been reproduced with permission granted by Thomas Brothers Maps. Copyright SanGIS. All Rights reserved.



Map Date: October 31, 2007  
File: P:\GIS\BDC\CR\Incidents

